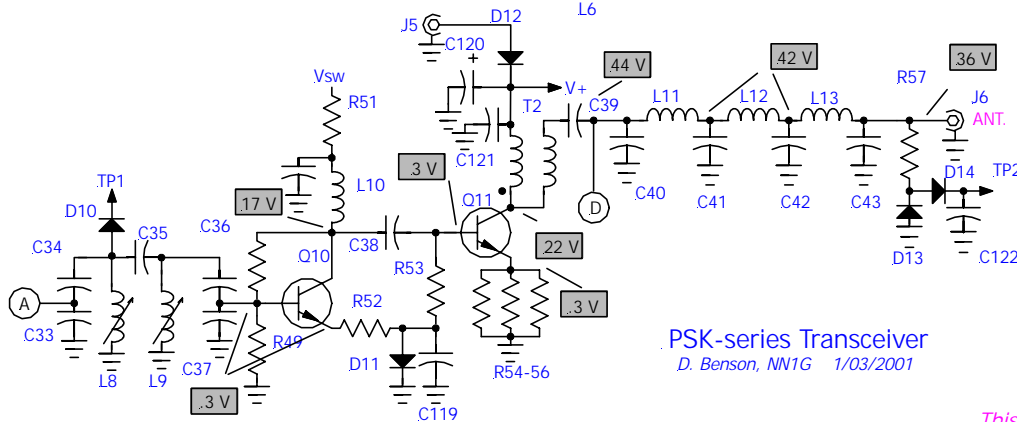
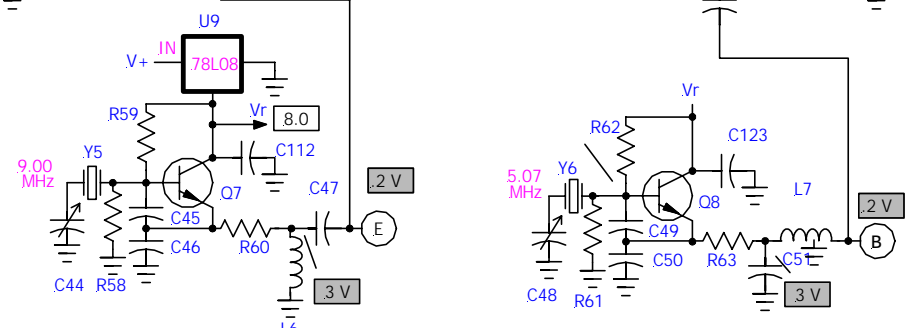


Test Conditions:

- 1) Receive Alignment complete
- 2) Frequency cursor set to 14072
- 3) Mode = 'Tune' (100% duty cycle), L8,L9 peaked.

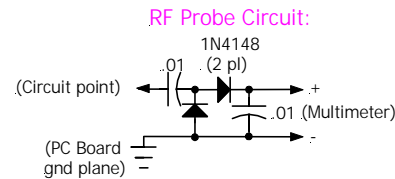


PSK-series Transceiver  
D. Benson, NN1G 1/03/2001

### Troubleshooting Chart- RF Measurements

All readings in shaded rectangles made with RF probe circuit (below) with attached Multimeter, DC volts scale.

All reading in ovals made with Multimeter, AC volts scale



*This circuit may be constructed on a small scrap of printed circuit- board material. Note its similarity to the TP2 circuitry- that circuit may be pressed into service by cutting R57's lead and inserting a series blocking cap and 'flying lead' to the desired circuit point.*